

# Royal Oak Schools

---

**Demographic and Enrollment Trend Update**  
**October 2023**



# Agenda

---

- **Overview of Plante Moran Cresa**
- **District Demographics and Trends**
- **Pupil Enrollment Methodology**
- **District-wide Pupil Enrollment Projection**
- **Questions/Answers**

# Plante Moran Cresa Overview

---

## **Collective Expertise**

Planners, architects, engineers, construction experts, financial advisors and real estate professionals – dedicated to our clients

## **Full Service**

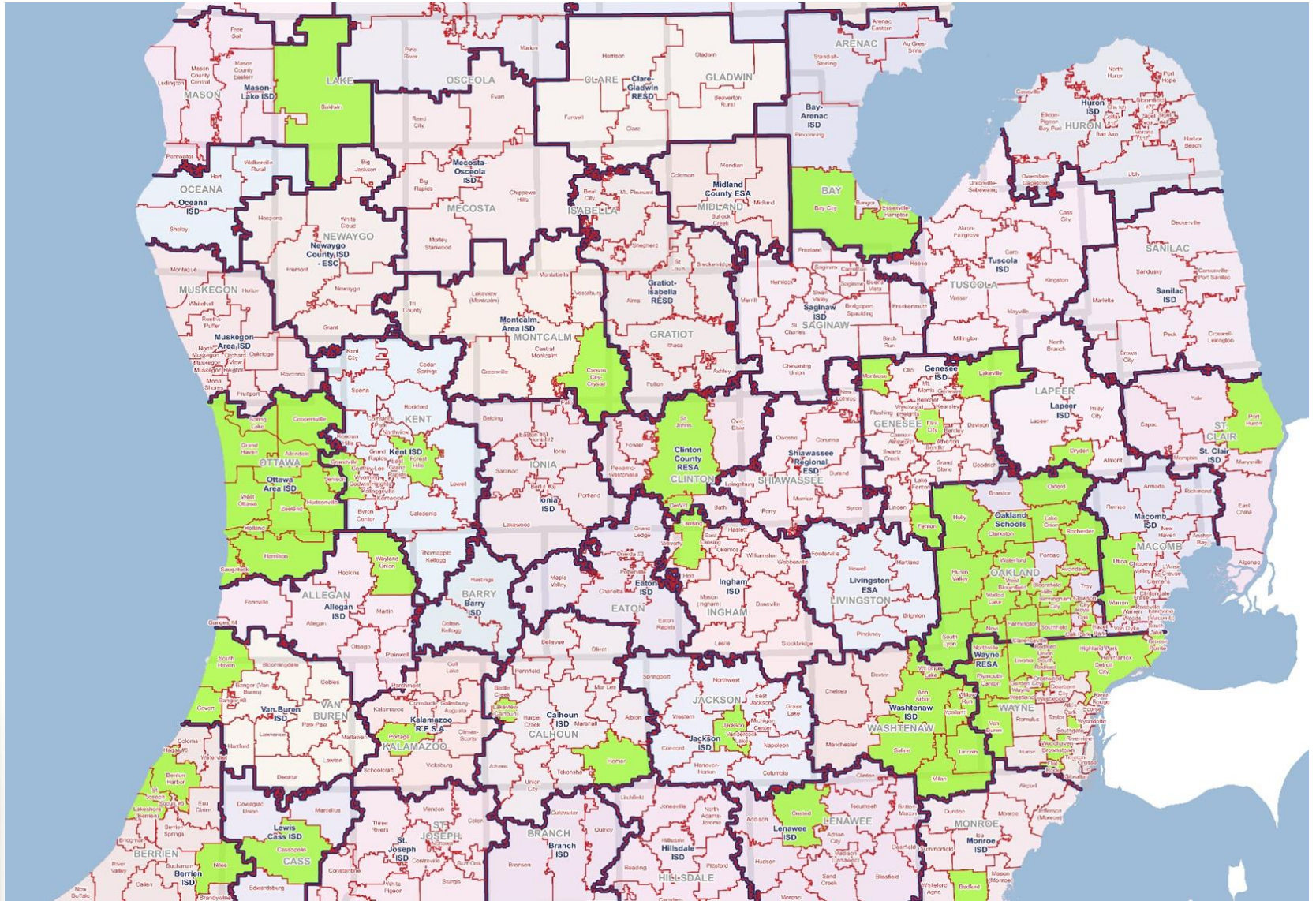
Ability to service K-12 clients from concept to completion

- Enrollment Projections – recognized by Dept. of Treasury
- Bond Planning / Feasibility Studies
- Program Management during design, construction, and close-out
- Real Estate Asset Positioning

## **Independent Advice**

Advisory services are provided without conflicts — our objective is your success

# Plante Moran Cresa Overview

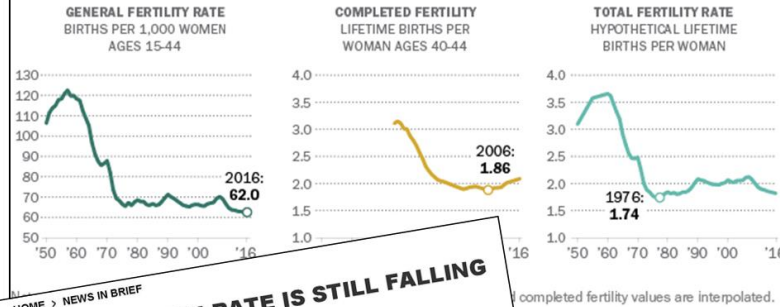




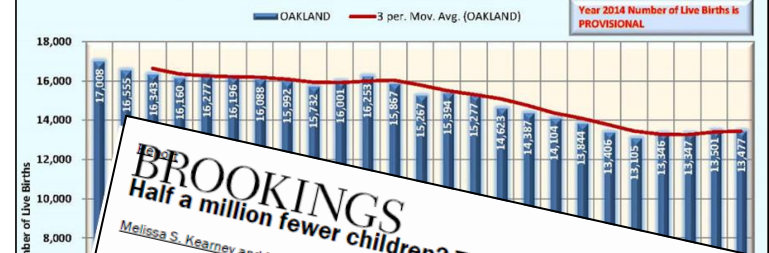
# Demographics & Trends

## U.S. fertility hit all-time low in 2016 ... and 2006 ... and 1976

Fertility indicators



## Michigan Live Birth by County of Residence \*



HOME > NEWS IN BRIEF

## THE U.S. BIRTH RATE IS STILL FALLING

But that's not necessarily a bad thing.

KATE WHEELING · JAN 11, 2019

The fertility rate in the United States has been falling for would be declining without immigration, according to a Prevention. This marks the seventh straight year that the

In 2017, the nationwide fertility rate was 1,765.5 births rate of 2,100 births per 1,000 women necessary to keep differences: South Dakota, for example, had the highest women, while Washington, D.C., had the lowest with birth rates above replacement levels.

Though the report doesn't speculate about why fertility that cultural shifts, economic anxiety, and a slew of

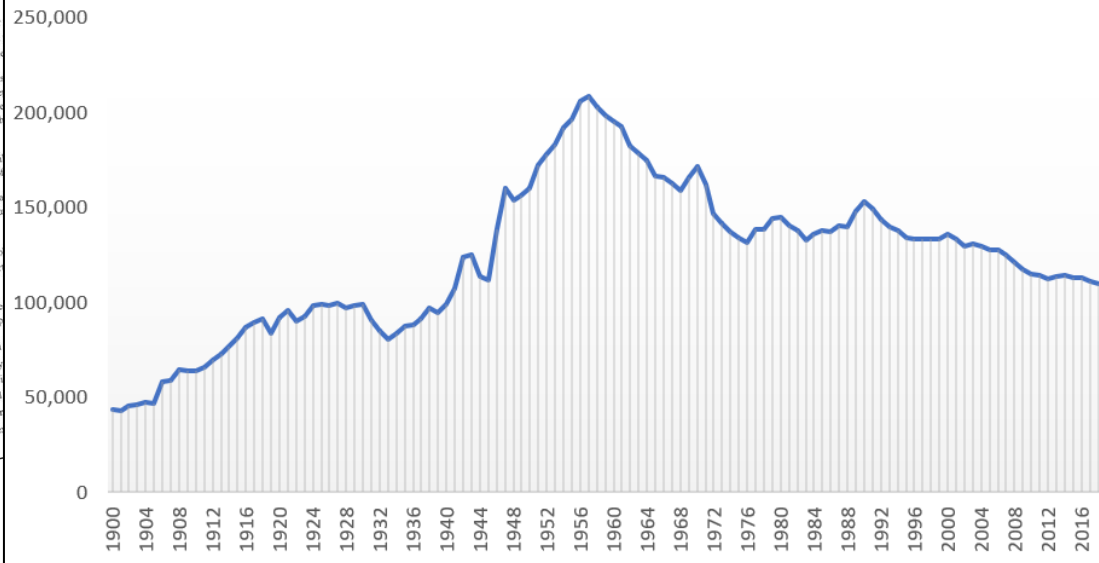
"It seems like the immediate causal factor is prob South Carolina. "Fertility started to fall right around again."

"It seems like the immediate causal factor is pro the University of South Carolina. "Fertility star come back up again."

Childbearing decisions are often tied to our fe the economic indicators have improved, prop

Static wages after the last recession coupled Millennials with too much financial anxiety the U.S. "Two-thirds of first-time mothers only two countries without a national paid leave. A little over half of U.S. compar income.

## Number of Michigan births, 1900 to 2022



**BROOKINGS**  
Half a million fewer children? The coming COVID baby bust

Melissa S. Kearney and Phillip B. Levine Monday, June 15, 2020

The COVID-19 episode will likely lead to a large, lasting baby bust. The pandemic has thrust the country into an economic crisis, and evidence suggests that births could fall by as much as half a million in the coming years. Economic reasoning and past experience suggest that the decline in births next year. We base this on fertility behavior, along with data from the 1918 Spanish Flu.

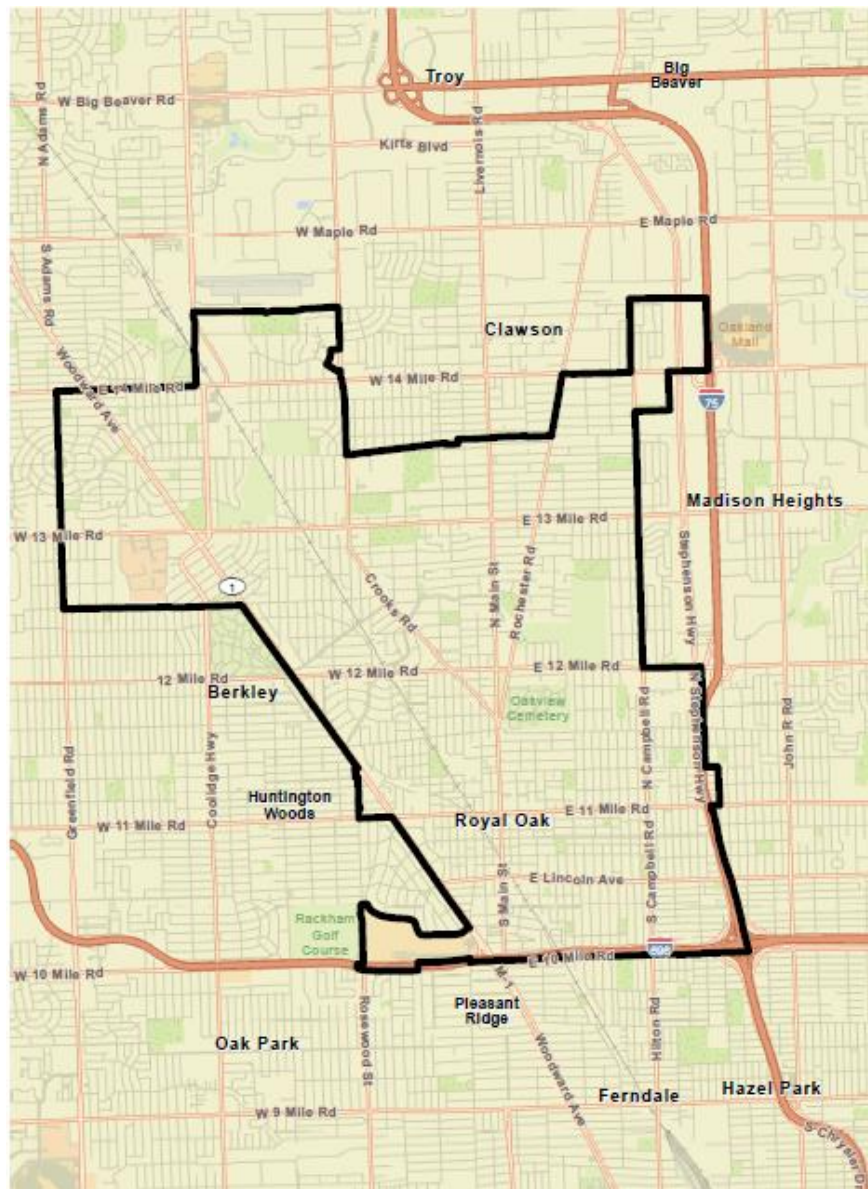
playfully speculated that there "truck home" with their myths about birth spikes (kouts. As it turns out, those 7Q). But the COVID-19 crisis ter. It is leading to why birth rates will

aviors and ultimately tility is different than end to focus on the control or abortion. own previous research it is important to ices.

# Demographics & Trends

## □ PMC's Process

- Demographic Growth
  - GIS
  - US Census Bureau
- Core Base Statistical Area
  - Primary Area (District)
  - Comparison #1 (County)
  - Comparison #2 (State)
- Cohort Survival – DS 4061



# Demographics & Trends

Population:	61,850
Total Households (Occupied)	30,684
Median Age of Householder	48.6
Median Housing Value	\$152,992
Median Household Income	\$83,222
Households w/ Children	15,149
Ave. # of K-12 Pupil Per Housing Unit	0.49%
Enrolled School-age Children (PK-12)	6,547
Enrolled in Public Pre-primary	48.25%
Enrolled in Private Pre-primary	51.75%
Enrolled in Public Schools (K-12)	79.58%
Enrolled in Private Schools (K-12)	20.42%

School District Data Book

=== General Characteristics Profile (Summary) ===

Primary Area: Royal Oak Schools

Comparison Area 1: County of Oakland

Comparison Area 2: State of Michigan

	Primary Area	Comparison Area 1	Comparison Area 2
	Royal Oak Schools	Oakland County	Michigan
County FIPS Code (Some Districts)			26125
Grade Range (District)	KG - 12		
Total Persons	61,850	1,258,791	9,998,925
Urban Population	100.00%	95.18%	74.69%
White	84.46%	69.27%	71.90%
Black	5.36%	14.65%	14.06%
Asian	3.41%	7.38%	3.21%
Am. Indian/Alaskan	0.30%	0.31%	0.82%
Other	0.57%	1.10%	1.71%
2 or More Races	3.16%	3.35%	3.42%
Hispanic	2.73%	3.95%	4.87%
Median Age	38.6	41.4	40.2
Total Housing Units	32,535	550,041	4,635,434
Total Housing Units - Occupied	30,684	513,660	3,975,882
Median Housing Value	\$ 152,992	\$ 178,611	\$ 125,826
Median Household Income	\$ 83,222	\$ 90,893	\$ 67,645
Average Household Income	\$ 104,490	\$ 120,781	\$ 87,816
Per Capita Personal Income	\$ 52,269	\$ 49,703	\$ 35,411
High Income Average	\$ 308,354	\$ 337,807	\$ 324,462
Total Number of Families	13,780	324,499	2,517,323
Total Number of Households	30,684	513,660	3,975,882
Average Household Size	2.00	2.43	2.46
Median Household Size	2.20	2.60	2.60
Median Age of Householder	48.6	54.0	54.1
Households with School Age Children	15,149	227,680	1,494,119
% of Household with School Age Children	49.4%	44.3%	37.6%
Average # of K-12 children per household	0.43	0.94	1.21
Average # of K-12 children per housing unit	0.49	0.44	0.38
Median Year Moved In	2009	2003	2004
Enrolled School Age Children PK-12	6,547	213,435	1,806,107
Enrolled in Public Pre-primary School	48.25%	55.88%	67.90%
Enrolled in Private Pre-primary School	51.75%	44.12%	32.10%
Enrolled in Public School (K-12)	79.58%	85.92%	88.92%
Enrolled in Private School (K-12)	20.42%	14.08%	11.08%
Household Educational Attainment (Pop 25+)			
Less Than High School (no diploma)	3.99%	6.08%	9.63%
High School Graduate	16.11%	18.03%	28.17%
Some College	19.05%	20.77%	23.77%
Associate's Degree (2 years)	7.93%	8.10%	9.72%
Bachelor's Degree (4 years)	31.14%	26.82%	17.49%
Master's Degree	15.47%	14.73%	8.33%
Professional Degree	4.36%	3.50%	1.76%
Doctorate Degree	1.95%	1.97%	1.14%
Employment Profile (Pop 16+)			
White Collar Occupations	77.38%	71.09%	58.20%
Blue Collar Occupations	11.49%	14.50%	23.55%
Service Occupations	11.13%	14.41%	18.25%

# Demographics & Trends

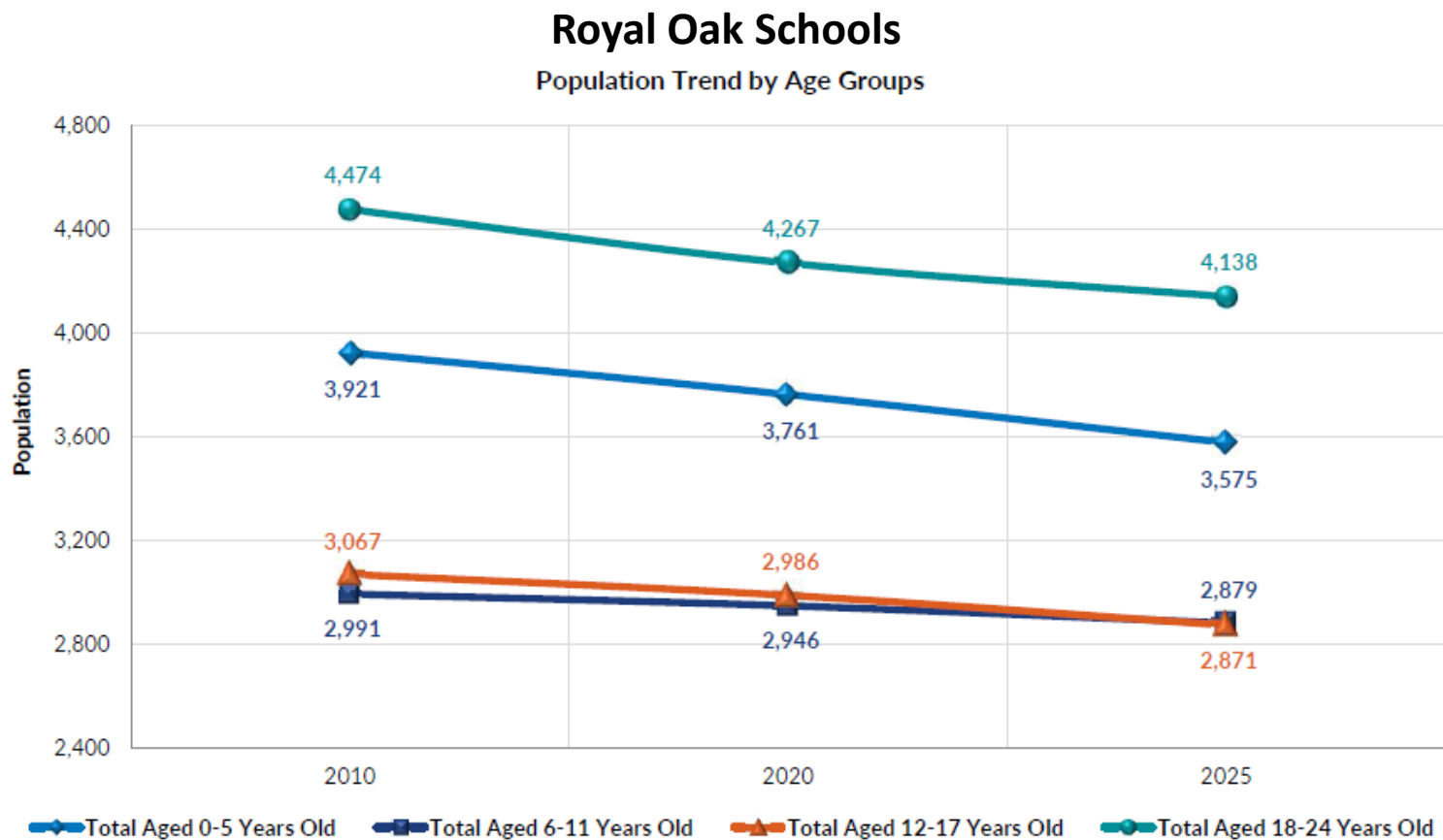
---

## District Demographic Trend Summary

	<u>2010</u>	<u>2020</u>	<u>2025</u>	<u>Difference</u> <u>(last 5 years)</u>
Population	59,249	61,850	62,651	+801
Total Households (Occupied)	28,974	30,684	31,287	+603
Median Household Owner Age	48.3	48.6	51.1	+2.5 years
Enrolled School-age Children (PK-12)	6,906	6,547	6,320	-317

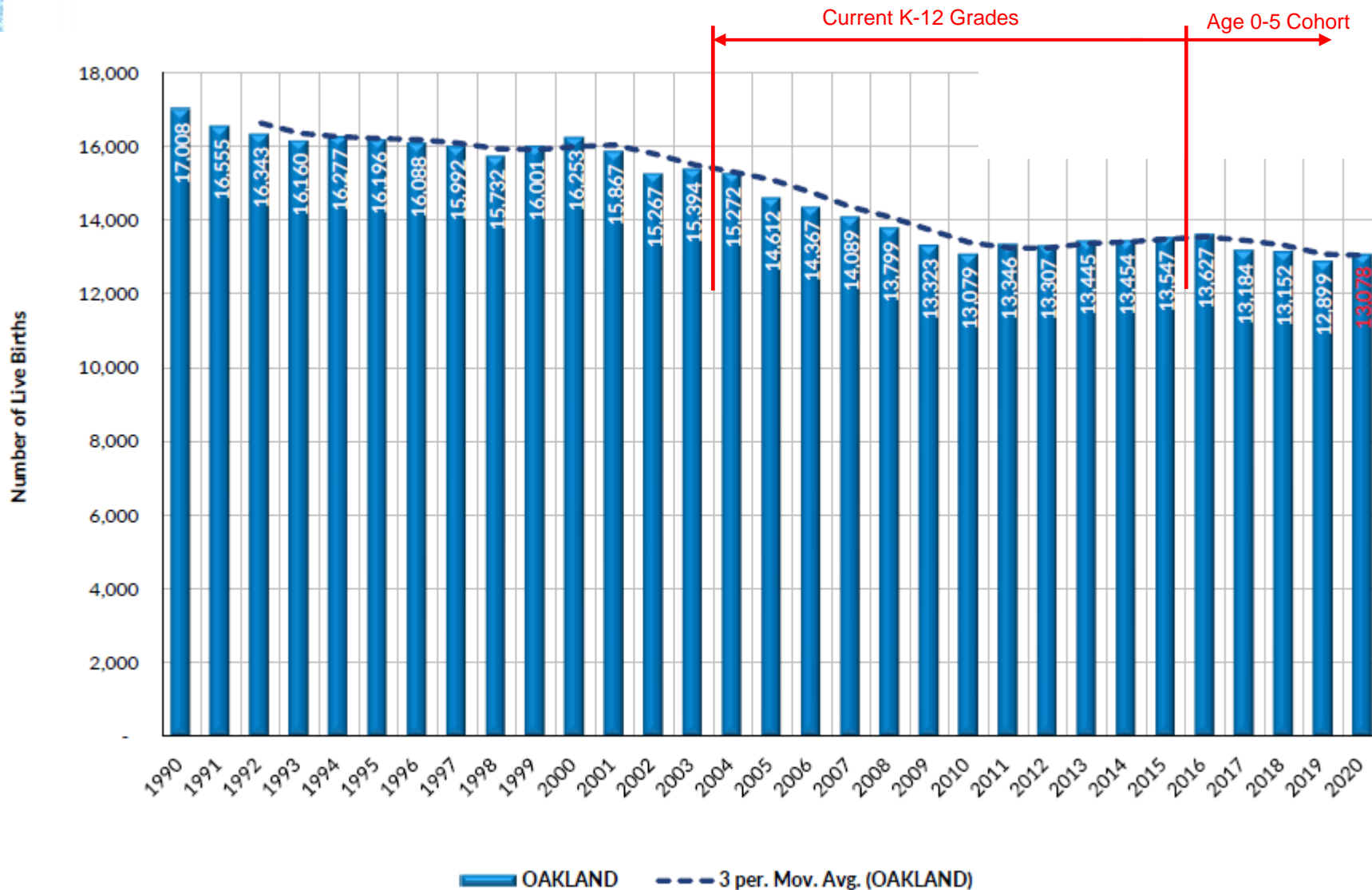


# Demographics & Trends

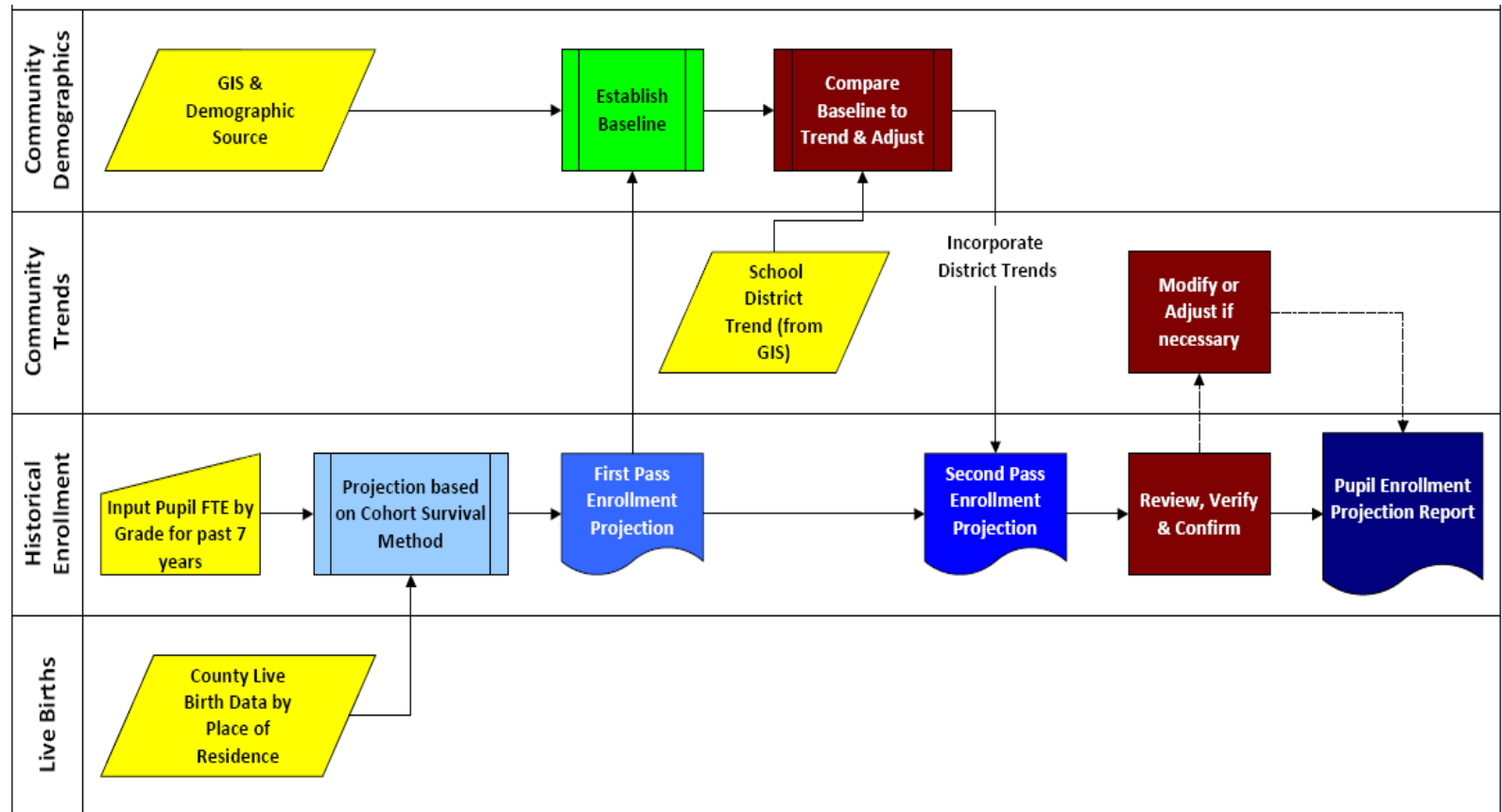


# Demographics & Trends

Michigan Live Births by County of Residence \*



# Methodology



# District-wide Historical Enrollment

Royal Oak Schools

Oakland County, Michigan

K-12 Pupil Membership in General Education (Historical)

Please Indicate:

HEAD COUNT

DISTRICT WIDE (ALL PUPILS)

	Academic Year 2013			Academic Year 2014			Academic Year 2015			Academic Year 2016			Academic Year 2017		
Grade	Fall 2013	Spring 2014	Blended*	Fall 2014	Spring 2015	Blended*	Fall 2015	Spring 2016	Blended*	Fall 2016	Spring 2017	Blended*	Fall 2017	Spring 2018	Blended*
K	400.00	-		411.00	-		395.00	-		395.00	-		403.00	-	
1	415.00	-		396.00	-		393.00	-		403.00	-		396.00	-	
2	413.00	-		400.00	-		390.00	-		392.00	-		404.00	-	
3	361.00	-		392.00	-		398.00	-		394.00	-		402.00	-	
4	409.00	-		361.00	-		387.00	-		392.00	-		389.00	-	
5	359.00	-		404.00	-		365.00	-		392.00	-		374.00	-	
6	348.00	-		372.00	-		408.00	-		373.00	-		405.00	-	
7	333.00	-		350.00	-		375.00	-		414.00	-		370.00	-	
8	363.00	-		333.00	-		355.00	-		374.00	-		412.00	-	
9	334.00	-		331.00	-		308.00	-		358.00	-		363.00	-	
10	335.00	-		318.00	-		321.00	-		298.00	-		349.00	-	
11	332.00	-		312.00	-		309.00	-		312.00	-		278.00	-	
12	336.00	-		317.00	-		307.00	-		307.00	-		311.00	-	
K-12	4,738.00	-	-	4,697.00	-	-	4,711.00	-	-	4,804.00	-	-	4,856.00	-	-
ECC + ECSE	82.00	-		82.00	-		100.00	-		104.00	-		124.00	-	
Alt. Ed.	145.00	-		124.00	-		90.00	-		99.00	-		90.00	-	
Total	4,965.00	-	-	4,903.00	-	-	4,901.00	-	-	5,007.00	-	-	5,070.00	-	-

	Academic Year 2018			Academic Year 2019			Academic Year 2020			Academic Year 2021			Academic Year 2022 Projected		
Grade	Fall 2018	Spring 2019	Blended*	Fall 2019	Spring 2020	Blended*	Fall 2020	Spring 2021	Blended*	Fall 2021	Spring 2022	Blended*	Fall 2022 Projected	Spring 2023 Projected	Blended 2022 Projected
K	375.00	-		459.00	-		439.00	-		384.00	-		404.07	-	-
1	409.00	-		369.00	-		356.00	-		366.00	-		411.72	-	-
2	393.00	-		410.00	-		342.00	-		324.00	-		345.79	-	-
3	402.00	-		397.00	-		398.00	-		342.00	-		342.45	-	-
4	386.00	-		393.00	-		372.00	-		386.00	-		385.60	-	-
5	373.00	-		384.00	-		376.00	-		350.00	-		360.50	-	-
6	384.00	-		375.00	-		392.00	-		358.00	-		379.53	-	-
7	400.00	-		389.00	-		375.00	-		361.00	-		387.06	-	-
8	364.00	-		392.00	-		376.00	-		368.00	-		368.77	-	-
9	388.00	-		342.00	-		372.00	-		340.00	-		357.81	-	-
10	355.00	-		381.00	-		339.00	-		365.00	-		363.99	-	-
11	326.00	-		342.00	-		371.00	-		325.00	-		323.80	-	-
12	275.00	-		324.00	-		347.00	-		366.00	-		369.19	-	-
K-12	4,830.00	-	-	4,957.00	-	-	4,855.00	-	-	4,635.00	-	-	4,800.27	-	-
ECC + ECSE	123.00	-		127.00	-		109.00	-		80.00	-		122.60	-	-
Alt. Ed.	87.00	-		91.00	-		89.00	-		90.00	-		87.86	-	-
Total	5,040.00	-	-	5,175.00	-	-	5,053.00	-	-	4,862.00	-	-	5,010.73	-	-

Note: \* Pupil Blended Count membership (number) is calculated based on 90% of Fall count & 10% of Spring count of a Calendar year.

Source: Office of Pupil Accounting, Royal Oak Schools





# District-wide Projected Pupil Enrollment

## ENROLLMENT PROJECTION USING COHORT SURVIVAL METHOD & Adjusted to Community Demographic Trends

Educational Agency Name: Royal Oak Schools  
County: Oakland

BASED ON 2021 FALL HEAD COUNT  
DISTRICT WIDE (ALL PUPILS)

### Grade Pattern Compilation

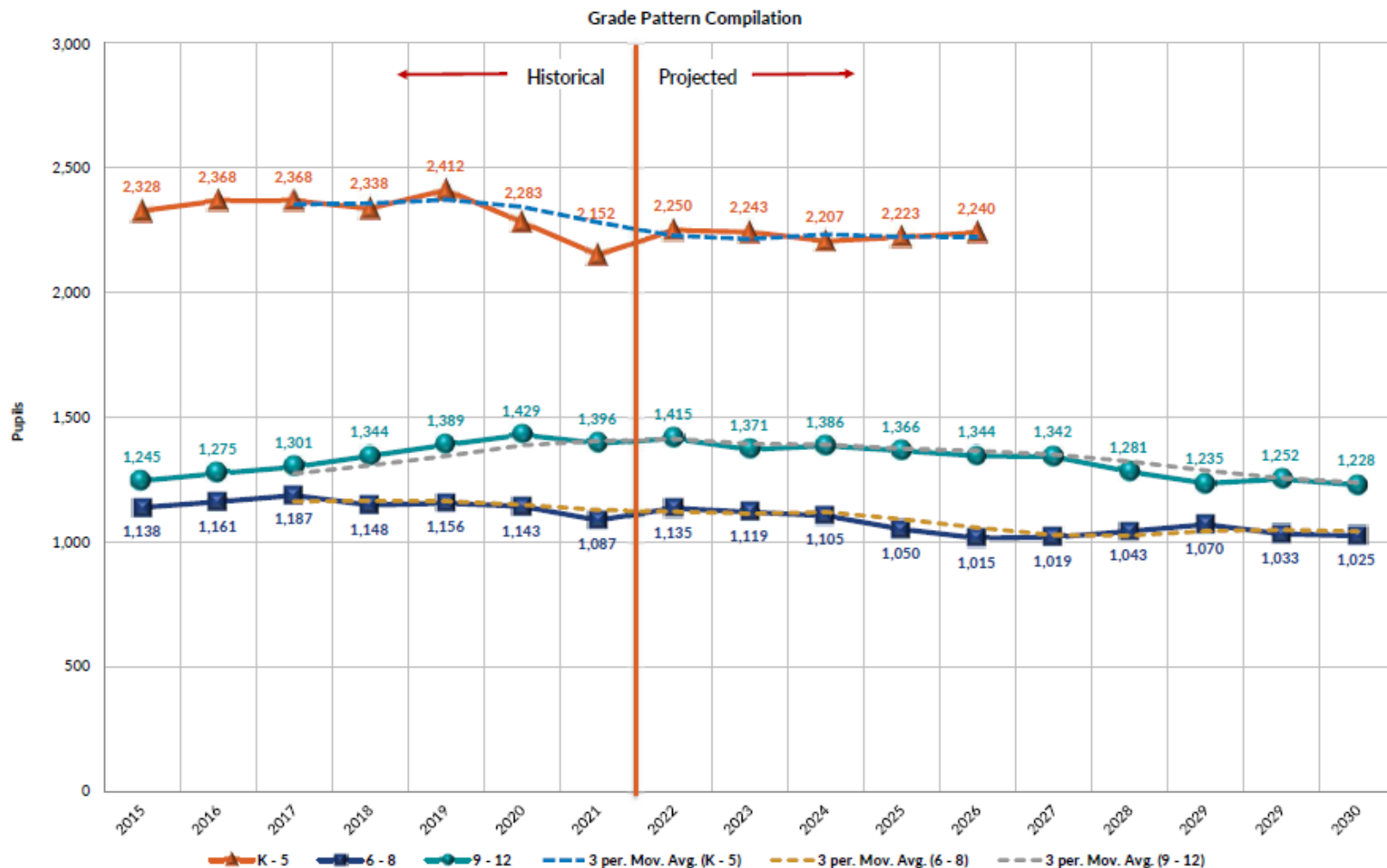
Grade Pattern								Projection Data										
	2015	2016	2017	2018	2019	2020	2021	2022	2023	2024	2025	2026	2027	2028	2029	2030	2031	
K - 1	788	798	799	784	828	795	750	816	791	782	766	771	N.A.	N.A.	N.A.	N.A.	N.A.	
K - 2	1,178	1,190	1,203	1,177	1,238	1,137	1,074	1,162	1,191	1,150	1,141	1,131	N.A.	N.A.	N.A.	N.A.	N.A.	
K - 3	1,576	1,584	1,605	1,579	1,635	1,535	1,416	1,504	1,537	1,550	1,510	1,507	N.A.	N.A.	N.A.	N.A.	N.A.	
K - 4	1,963	1,976	1,994	1,965	2,028	1,907	1,802	1,890	1,869	1,886	1,898	1,864	N.A.	N.A.	N.A.	N.A.	N.A.	
K - 5	2,328	2,368	2,368	2,338	2,412	2,283	2,152	2,250	2,243	2,207	2,223	2,240	N.A.	N.A.	N.A.	N.A.	N.A.	
K - 6	2,736	2,741	2,773	2,722	2,787	2,675	2,510	2,630	2,607	2,584	2,547	2,568	N.A.	N.A.	N.A.	N.A.	N.A.	
1 - 2	783	795	800	802	779	698	690	758	779	755	746	731	735	N.A.	N.A.	N.A.	N.A.	
1 - 3	1,181	1,189	1,202	1,204	1,176	1,096	1,032	1,100	1,125	1,155	1,115	1,106	1,096	N.A.	N.A.	N.A.	N.A.	
1 - 4	1,568	1,581	1,591	1,590	1,569	1,468	1,418	1,486	1,457	1,491	1,503	1,464	1,460	N.A.	N.A.	N.A.	N.A.	
1 - 5	1,933	1,973	1,965	1,963	1,953	1,844	1,768	1,846	1,831	1,812	1,828	1,839	1,806	N.A.	N.A.	N.A.	N.A.	
1 - 6	2,341	2,346	2,370	2,347	2,328	2,236	2,126	2,226	2,194	2,189	2,152	2,168	2,186	N.A.	N.A.	N.A.	N.A.	
2 - 3	788	786	806	795	807	740	666	688	746	769	744	736	720	725	N.A.	N.A.	N.A.	
2 - 4	1,175	1,178	1,195	1,181	1,200	1,112	1,052	1,074	1,078	1,104	1,132	1,093	1,085	1,074	N.A.	N.A.	N.A.	
2 - 5	1,540	1,570	1,569	1,554	1,584	1,488	1,402	1,434	1,452	1,425	1,457	1,469	1,431	1,427	N.A.	N.A.	N.A.	
2 - 6	1,948	1,943	1,974	1,938	1,959	1,880	1,760	1,814	1,815	1,803	1,782	1,797	1,810	1,777	N.A.	N.A.	N.A.	
3 - 4	785	786	791	788	790	770	728	728	678	736	757	733	725	710	714	N.A.	N.A.	
3 - 5	1,150	1,178	1,165	1,161	1,174	1,146	1,078	1,089	1,052	1,057	1,082	1,109	1,071	1,063	1,053	N.A.	N.A.	
3 - 6	1,558	1,551	1,570	1,545	1,549	1,538	1,436	1,468	1,416	1,435	1,406	1,437	1,450	1,412	1,409	N.A.	N.A.	
4 - 5	752	784	763	759	777	748	736	746	705	657	713	733	710	702	688	692	N.A.	
4 - 6	1,160	1,157	1,168	1,143	1,152	1,140	1,094	1,126	1,069	1,034	1,038	1,061	1,090	1,052	1,044	1,034	N.A.	
5 - 6	773	765	779	757	759	768	708	740	738	699	650	704	726	702	695	680	684	
5 - 7	1,148	1,179	1,149	1,157	1,148	1,143	1,069	1,127	1,112	1,058	1,022	1,025	1,050	1,077	1,040	1,032	1,022	
5 - 8	1,503	1,553	1,561	1,521	1,540	1,519	1,437	1,496	1,493	1,427	1,375	1,391	1,365	1,396	1,408	1,371	1,368	
6 - 7	783	787	775	784	764	767	719	767	739	736	697	649	703	724	701	693	679	
6 - 8	1,138	1,161	1,187	1,148	1,156	1,143	1,087	1,135	1,119	1,105	1,050	1,015	1,019	1,043	1,070	1,033	1,025	
7 - 8	730	788	782	764	781	751	729	756	755	728	726	687	639	693	713	691	683	
7 - 9	1,038	1,146	1,145	1,152	1,123	1,123	1,069	1,114	1,106	1,090	1,076	1,023	988	993	1,017	1,042	1,006	
7 - 10	1,359	1,444	1,494	1,507	1,504	1,462	1,434	1,478	1,456	1,433	1,431	1,366	1,317	1,334	1,310	1,338	1,349	
7 - 11	1,668	1,756	1,772	1,833	1,846	1,833	1,759	1,801	1,804	1,768	1,759	1,705	1,644	1,648	1,636	1,619	1,633	
7 - 12	1,975	2,063	2,083	2,108	2,170	2,180	2,125	2,171	2,126	2,114	2,092	2,031	1,981	1,975	1,948	1,943	1,911	
8 - 9	663	732	775	752	734	748	708	727	732	731	704	702	664	618	672	690	669	
8 - 10	984	1,030	1,124	1,107	1,115	1,087	1,073	1,091	1,082	1,074	1,058	1,046	993	960	965	986	1,012	
8 - 11	1,293	1,342	1,402	1,433	1,457	1,458	1,398	1,414	1,429	1,409	1,386	1,384	1,320	1,274	1,291	1,267	1,295	
8 - 12	1,600	1,649	1,713	1,708	1,781	1,805	1,764	1,784	1,752	1,754	1,719	1,711	1,657	1,600	1,604	1,591	1,574	
9 - 10	629	656	712	743	723	711	705	722	701	706	705	679	678	641	597	647	666	
9 - 11	938	968	990	1,069	1,065	1,082	1,030	1,046	1,049	1,040	1,033	1,018	1,005	955	922	928	949	
9 - 12	1,245	1,275	1,301	1,344	1,389	1,429	1,396	1,415	1,371	1,386	1,366	1,344	1,342	1,281	1,235	1,252	1,228	
10 - 12	937	917	938	956	1,047	1,057	1,056	1,057	1,020	1,024	1,015	1,008	994	981	932	901	905	

# District-wide Projected Pupil Enrollment

ENROLLMENT PROJECTION USING COHORT SURVIVAL METHOD  
& Adjusted to Community Demographic Trends

Educational Agency Name: Royal Oak Schools  
County: Oakland

BASED ON 2021 FALL HEAD COUNT  
DISTRICT WIDE (ALL PUPILS)



# Resident Only Historical Enrollment

Royal Oak Schools  
Oakland County, Michigan  
K-12 Pupil Membership in General Education (Historical)

Please Indicate: HEAD COUNT

RESIDENT ONLY

	Academic Year 2013			Academic Year 2014			Academic Year 2015			Academic Year 2016			Academic Year 2017		
Grade	Fall 2013	Spring 2014	Blended*	Fall 2014	Spring 2015	Blended*	Fall 2015	Spring 2016	Blended*	Fall 2016	Spring 2017	Blended*	Fall 2017	Spring 2018	Blended*
K	333.00	-		325.00	-		306.00	-		299.00	-		310.00	-	
1	347.00	-		318.00	-		299.00	-		303.00	-		299.00	-	
2	329.00	-		323.00	-		310.00	-		293.00	-		307.00	-	
3	289.00	-		308.00	-		309.00	-		310.00	-		289.00	-	
4	351.00	-		287.00	-		295.00	-		304.00	-		303.00	-	
5	305.00	-		348.00	-		288.00	-		301.00	-		288.00	-	
6	314.00	-		314.00	-		354.00	-		295.00	-		314.00	-	
7	292.00	-		308.00	-		313.00	-		355.00	-		294.00	-	
8	316.00	-		290.00	-		312.00	-		314.00	-		348.00	-	
9	298.00	-		291.00	-		266.00	-		319.00	-		311.00	-	
10	298.00	-		285.00	-		282.00	-		260.00	-		311.00	-	
11	299.00	-		273.00	-		278.00	-		273.00	-		241.00	-	
12	295.00	-		281.00	-		270.00	-		271.00	-		271.00	-	
K-12	4,066.00	-	-	3,951.00	-	-	3,882.00	-	-	3,897.00	-	-	3,886.00	-	-
ECC + ECSE	82.00	-		82.00	-		99.00	-		104.00	-		123.00	-	
Alt. Ed.	61.00	-		59.00	-		41.00	-		52.00	-		51.00	-	
Total	4,209.00	-	-	4,092.00	-	-	4,022.00	-	-	4,053.00	-	-	4,060.00	-	-

	Academic Year 2018			Academic Year 2019			Academic Year 2020			Academic Year 2021			Academic Year 2022 Projected		
Grade	Fall 2018	Spring 2019	Blended*	Fall 2019	Spring 2020	Blended*	Fall 2020	Spring 2021	Blended*	Fall 2021	Spring 2022	Blended*	Fall 2022 Projected	Spring 2023 Projected	Blended 2022 Projected
K	308.00	-		389.00	-		391.00	-		329.00	-		345.51	-	
1	317.00	-		302.00	-		296.00	-		318.00	-		362.57	-	
2	283.00	-		317.00	-		273.00	-		269.00	-		283.59	-	
3	293.00	-		287.00	-		307.00	-		274.00	-		269.50	-	
4	278.00	-		296.00	-		267.00	-		302.00	-		299.00	-	
5	279.00	-		274.00	-		271.00	-		255.00	-		255.47	-	
6	301.00	-		284.00	-		283.00	-		260.00	-		276.37	-	
7	315.00	-		301.00	-		288.00	-		262.00	-		280.11	-	
8	292.00	-		311.00	-		287.00	-		282.00	-		282.85	-	
9	327.00	-		284.00	-		297.00	-		265.00	-		277.41	-	
10	308.00	-		320.00	-		283.00	-		296.00	-		292.57	-	
11	291.00	-		293.00	-		311.00	-		275.00	-		269.88	-	
12	231.00	-		280.00	-		295.00	-		308.00	-		304.86	-	
K-12	3,823.00	-	-	3,938.00	-	-	3,849.00	-	-	3,695.00	-	-	3,799.69	-	-
ECC + ECSE	122.00	-		125.00	-		106.00	-		79.00	-		120.71	-	
Alt. Ed.	53.00	-		61.00	-		44.00	-		44.00	-		53.83	-	
Total	3,998.00	-	-	4,124.00	-	-	3,999.00	-	-	3,874.00	-	-	3,974.23	-	-





# Resident Only Projected Pupil Enrollment

## ENROLLMENT PROJECTION USING COHORT SURVIVAL METHOD & Adjusted to Community Demographic Trends

Educational Agency Name: Royal Oak Schools  
County: Oakland

BASED ON 2021 FALL HEAD COUNT  
RESIDENT ONLY

### Grade Pattern Compilation

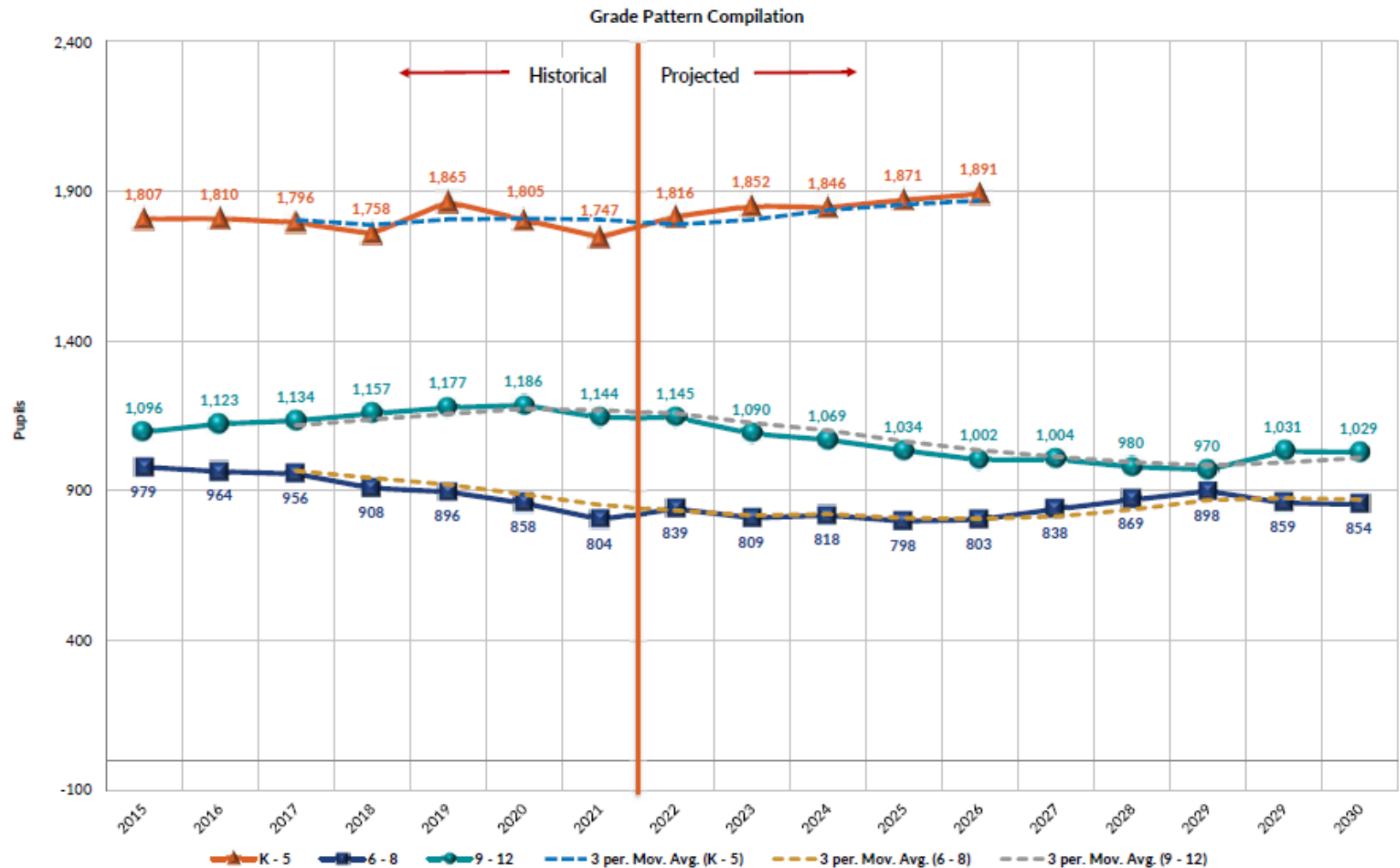
Grade Pattern								Projection Data									
	2015 2016	2016 2017	2017 2018	2018 2019	2019 2020	2020 2021	2021 2022	2022 2023	2023 2024	2024 2025	2025 2026	2026 2027	2027 2028	2028 2029	2029 2030	2030 2031	2031
K - 1	605	602	609	625	691	687	647	708	676	672	658	660	N.A.	N.A.	N.A.	N.A.	N.A.
K - 2	915	895	916	908	1,008	960	916	992	1,023	979	973	964	N.A.	N.A.	N.A.	N.A.	N.A.
K - 3	1,224	1,205	1,205	1,201	1,295	1,267	1,190	1,261	1,303	1,322	1,276	1,276	N.A.	N.A.	N.A.	N.A.	N.A.
K - 4	1,519	1,509	1,508	1,479	1,591	1,534	1,492	1,560	1,566	1,595	1,610	1,571	N.A.	N.A.	N.A.	N.A.	N.A.
K - 5	1,807	1,810	1,796	1,758	1,865	1,805	1,747	1,816	1,852	1,846	1,871	1,891	N.A.	N.A.	N.A.	N.A.	N.A.
K - 6	2,161	2,105	2,110	2,059	2,149	2,088	2,007	2,092	2,112	2,138	2,127	2,157	N.A.	N.A.	N.A.	N.A.	N.A.
1 - 2	609	596	606	600	619	569	587	646	668	637	634	620	622	N.A.	N.A.	N.A.	N.A.
1 - 3	918	906	895	893	906	876	861	916	948	980	937	931	922	N.A.	N.A.	N.A.	N.A.
1 - 4	1,213	1,210	1,198	1,171	1,202	1,143	1,163	1,215	1,210	1,252	1,271	1,226	1,226	N.A.	N.A.	N.A.	N.A.
1 - 5	1,501	1,511	1,486	1,450	1,476	1,414	1,418	1,470	1,496	1,503	1,531	1,546	1,508	N.A.	N.A.	N.A.	N.A.
1 - 6	1,855	1,806	1,800	1,751	1,760	1,697	1,678	1,747	1,757	1,795	1,788	1,812	1,834	N.A.	N.A.	N.A.	N.A.
2 - 3	619	603	596	576	604	580	543	553	627	650	619	616	602	605	N.A.	N.A.	N.A.
2 - 4	914	907	899	854	900	847	845	852	890	923	953	911	906	897	N.A.	N.A.	N.A.
2 - 5	1,202	1,208	1,187	1,133	1,174	1,118	1,100	1,108	1,176	1,174	1,214	1,231	1,188	1,188	N.A.	N.A.	N.A.
2 - 6	1,556	1,503	1,501	1,434	1,458	1,401	1,360	1,384	1,436	1,465	1,470	1,497	1,514	1,476	N.A.	N.A.	N.A.
3 - 4	604	614	592	571	583	574	576	569	542	616	637	607	604	591	593	N.A.	N.A.
3 - 5	892	915	880	850	857	845	831	824	829	867	898	926	887	881	873	N.A.	N.A.
3 - 6	1,246	1,210	1,194	1,151	1,141	1,128	1,091	1,100	1,089	1,158	1,154	1,193	1,212	1,169	1,169	N.A.	N.A.
4 - 5	583	605	591	557	570	538	557	554	549	524	595	615	586	583	570	572	N.A.
4 - 6	937	900	905	858	854	821	817	831	809	816	851	881	912	871	867	858	N.A.
5 - 6	642	596	602	580	558	554	515	532	547	543	517	586	608	579	576	563	565
5 - 7	955	951	896	895	859	842	777	812	820	801	806	839	872	901	861	857	848
5 - 8	1,267	1,265	1,244	1,187	1,170	1,129	1,059	1,095	1,095	1,069	1,059	1,123	1,121	1,160	1,178	1,137	1,136
6 - 7	667	650	608	616	585	571	522	556	534	550	545	520	589	611	581	579	566
6 - 8	979	964	956	908	896	858	804	839	809	818	798	803	838	869	898	859	854
7 - 8	625	669	642	607	612	575	544	563	549	527	542	537	512	581	602	573	571
7 - 9	891	988	953	934	896	872	809	840	822	792	802	782	786	822	852	879	841
7 - 10	1,173	1,248	1,264	1,242	1,216	1,155	1,105	1,133	1,095	1,062	1,064	1,038	1,028	1,092	1,089	1,126	1,143
7 - 11	1,451	1,521	1,505	1,533	1,509	1,466	1,380	1,403	1,374	1,322	1,321	1,288	1,272	1,322	1,346	1,352	1,378
7 - 12	1,721	1,792	1,776	1,764	1,789	1,761	1,688	1,708	1,639	1,596	1,576	1,539	1,516	1,561	1,572	1,604	1,599
8 - 9	578	633	659	619	595	584	547	560	549	535	513	528	523	499	567	586	559
8 - 10	860	893	970	927	915	867	843	853	822	804	775	784	764	769	804	832	860
8 - 11	1,138	1,166	1,211	1,218	1,208	1,178	1,118	1,123	1,101	1,065	1,032	1,034	1,008	999	1,061	1,058	1,095
8 - 12	1,408	1,437	1,482	1,449	1,488	1,473	1,426	1,428	1,365	1,338	1,287	1,286	1,253	1,238	1,287	1,311	1,317
9 - 10	548	579	622	635	604	580	561	570	547	535	522	501	515	511	487	552	572
9 - 11	826	852	863	926	897	891	836	840	826	796	778	750	759	741	745	779	807
9 - 12	1,096	1,123	1,134	1,157	1,177	1,186	1,144	1,145	1,090	1,069	1,034	1,002	1,004	980	970	1,031	1,029
10 - 12	830	804	823	830	893	889	879	867	817	803	774	757	730	739	720	725	758

# Resident Only Projected Pupil Enrollment

ENROLLMENT PROJECTION USING COHORT SURVIVAL METHOD  
& Adjusted to Community Demographic Trends

Educational Agency Name: Royal Oak Schools  
County: Oakland

BASED ON 2021 FALL HEAD COUNT  
RESIDENT ONLY



# Questions/Answers

---

